



**MISSING
BILLION**

Missing Billion – Lighthouses

October 2023

Background

- **People with disabilities include those who have long-term physical, mental, intellectual or sensory impairments** which in interaction with various barriers may hinder their full and effective participation in society on an equal basis with others.
- **The Missing Billion reports from [2019](#) and [2022](#) highlight that people with disabilities experience worse health than others in the population**, across the Sustainable Development Goal 3 targets.
- People with disabilities face significant barriers to access to healthcare and suffer from worse health outcomes on multiple dimensions. **For example, their mortality rates are 2.4x higher, they are 3x more likely to have diabetes, and 2x more likely to have HIV/AIDS**
- **Globally, there are at least 1.3 billion people with disabilities, making up 16% of the population.** Failure to ensure the right to healthcare of people with disabilities will therefore mean that global targets, such as Universal Health Coverage, will be difficult or impossible to achieve.

The Missing Billion aims to catalyze change across health systems globally to be more disability inclusive

The Missing Billion Initiative is a catalyst that aims to transform health systems to ensure better access and outcomes for people with disabilities

- Consists of a team of public health experts across **philanthropy, UN, academia** and **design**
- Delivers **tools, solutions and data**, and provides a **platform to mobilise change** in the sector
- Brings **cutting edge academic research** in close collaboration with **London School of Hygiene and Tropical Medicine**

**Measure
&
Improve**

**Innovate
& Test**

**Inform &
Influence**

**Mobilize
& Uptake**

MBI is collaborating with governments to build world-class lighthouses for disability-inclusive healthcare

What is a lighthouse use case?

A country collaboration at system and facility level to transform the healthcare system to a best-in-class, inclusive healthcare journey

Diagnostic & opportunity prioritization (Months 1-3)

- A **Run system level assessment**, identification of system level opportunities
- B **Run facility level assessment**, identification of opportunities to improve the service delivery at different facility archetypes
- C **Run healthcare worker training survey**, identification of training needs
- D **Run focus group discussions** with patients within lighthouse country, and OPDs
- E **Develop a nuanced blueprint to disability inclusive healthcare**, leveraging the knowledge and insights built through system and facility level assessments



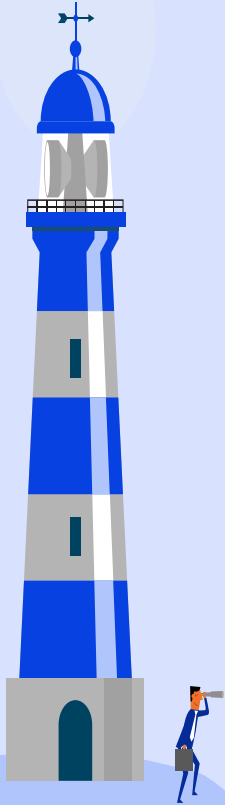
Implementation to achieve early wins (Months 4-6)

- F **Implement a set of prioritized interventions at a system level**, tailored to system maturity and specific country nuances
- G **Implement a set of prioritized interventions at a facility level**, tailored to the facility degree of disability inclusivity
- H **Develop and pilot healthcare worker training** according to identified needs



Scale up (Months 7-)

- I **Continue implementing system level interventions** that further improve healthcare system's inclusivity
- J **Roll out to other facilities in the same country and other countries' facilities**, refining the blueprint along the way



Building a lighthouse calls for a partnership between MBI and the host country health system

In a health system's journey to becoming a lighthouse, MBI will support by providing:



Tools needed for comprehensive diagnostic and intervention prioritization: Including the System Level Assessment, Facility Level Assessment, and Healthcare Worker Training Survey

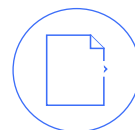


Support on applying tools: Provide support on applying all three tools in the field and planning the implementation of interventions



Support on reporting: Provide support and guidance on compiling results and communicating them effectively

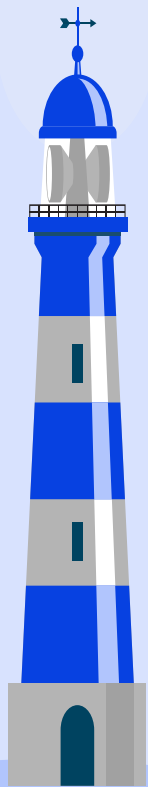
To transform a health system to a disability-inclusive Lighthouse, MBI requires the following:



Alignment with Ministry of Health: A signed agreement that outlines the scope of work, support, timelines, etc. involved in developing health system to a Lighthouse use case



Assigned focal point: A sufficiently resources team/department within the Ministry of Health that considers disability inclusivity part of their mandate



How to work with us

If you are interested in leveraging any or all the tools to move closer to becoming a lighthouse, please [reach out to us](#). **We will provide you with the requisite tools and support**, including:

- **The System Level Assessment toolkit**
- **The Facility Level Assessment toolkit**
- **The Healthcare Worker Training Survey**

Throughout your application of MBI's tools and assessments, **we ask that you support** the MBI **by providing**:

- **A focal point in your task team** to coordinate with The Missing Billion Initiative
- **Results of your assessments** so that we may compile and draw learning from assessments of healthcare systems globally



**MISSING
BILLION**

Thank you!